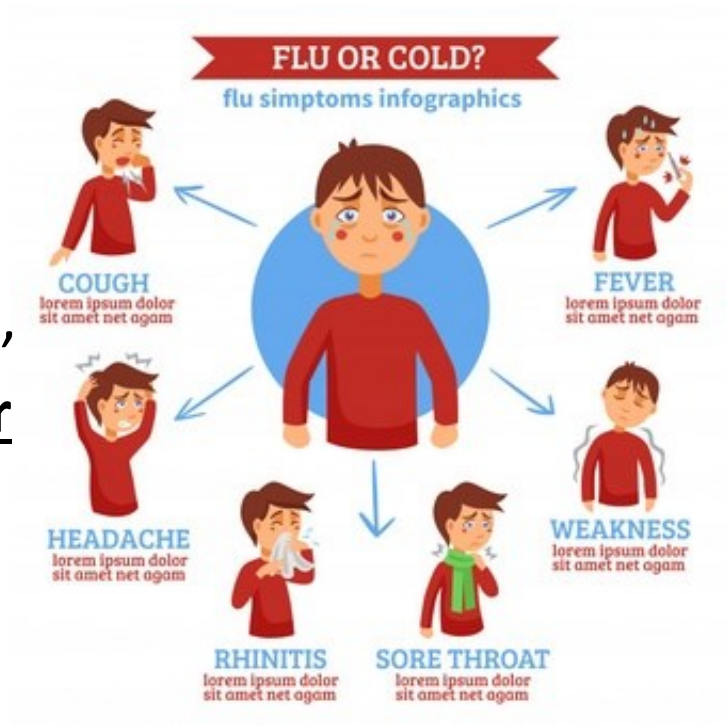




BEFORE YOU ENTER PLEASE TAKE NOTE

If you have **fever and/or cough, AND you or a close contact** have been to an **affected country** (China, Iran, Italy, Japan, South Korea) **or** You have been in close contact with a known **Flu** or **Coronavirus** patient in the **last 14 days,**



Please GO HOME and stay home until you have been symptom free for at least 48 hours.

If you need to speak with someone at this facility please call 315-574-7000 for assistance,

DO NOT ENTER THE BUILDING.